



The Stella Maris Seafarers' Centre in Hamburg

DEAR SEAFARERS,

welcome to the beautiful Stella Maris Centre in Hamburg. It is well situated in the inner harbor area, not far away from the Old Elbtunnel, which connects the port with the city of Hamburg. We offer you an oasis of peace and quiet, our friendship, our hospitality, and an open ear.



Yours
Monica Döring and Team

Mobile: + 49 (0) 163 248 77 17
www.facebook.com/hamburgstellamaris

PRAYER

*Lord, ruler over waves and seas,
keep your blessing hand over me and all seamen.
Give me the the strength
to lead a Christian life aboard our boat.
I do not wish to disappoint anyone
who may expect help from me aboard.
Keep my family at home under your protection.
Even when I am far away from them for long time
let me always be close to them.
Help me and all sailors
to keep on the right course always
and to reach the safe port. Amen.*



Catholic Seafarers' Mission Stella Maris
Ellerholzweg 1a · 20457 Hamburg
Phone: + 49 (0) 40 4154 28 72
Fax: + 49 (0) 40 41 54 28 73
Mobile: + 49 (0) 163 248 77 17
info@stella-maris.de · www.stella-maris.de
www.facebook.com/hamburgstellamaris

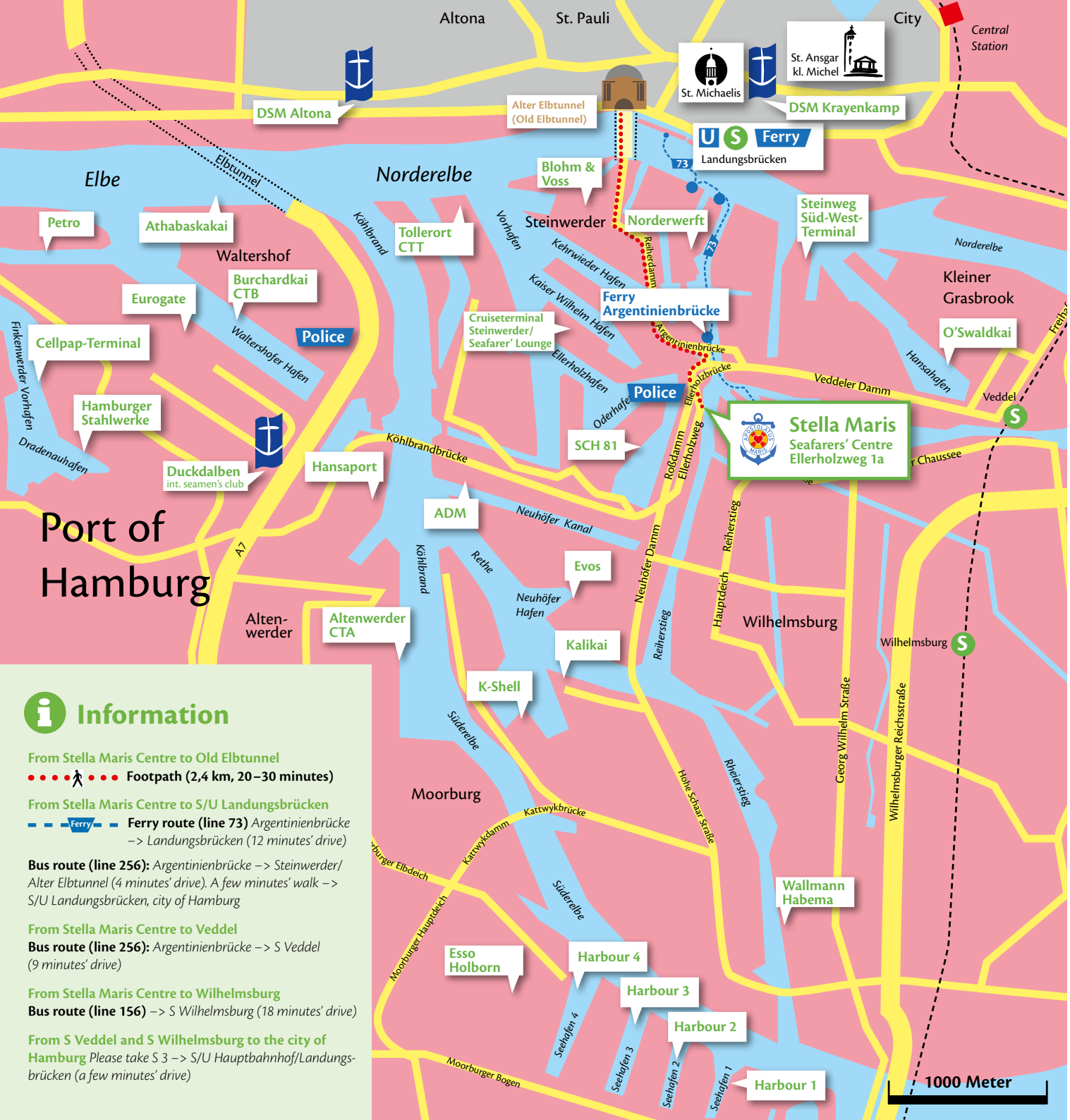
Foto: Titelfoto: Thomas Wagner

Catholic
Seafarers'
Mission



Welcome
to the Port of
Hamburg





Stella Maris Seafarers' Centre

A home far away from home

The Stella Maris Centre in Hamburg is a part of the Roman Catholic Church of Hamburg. We provide practical and spiritual care to all seafarers regardless of nationality, culture, belief, and professional status.

You are welcome to pray in our chapel, to enjoy our community, and to relax.

WELFARE CARE:

- Internet
- Telephone cards
- Books and newspapers
- Television and karaoke
- Shuttle bus
- Assistance in emergencies
- Liaising with welfare organisations
- Visits to hospital

SPIRITUAL CARE:

- Holy Mass
- Administration of sacraments
- Counselling and chaplaincy services
- Ship blessings

Port of Hamburg

i Information

- From Stella Maris Centre to Old Elbtunnel**
●●●● **Footpath (2,4 km, 20–30 minutes)**
- From Stella Maris Centre to S/U Landungsbrücken**
— **Ferry route (line 73) Argentinienbrücke**
 → Landungsbrücken (12 minutes' drive)
- Bus route (line 256):** Argentinienbrücke → Steinwerder/
 Alter Elbtunnel (4 minutes' drive). A few minutes' walk →
 S/U Landungsbrücken, city of Hamburg
- From Stella Maris Centre to Veddel**
Bus route (line 256): Argentinienbrücke → S Veddel
 (9 minutes' drive)
- From Stella Maris Centre to Wilhelmsburg**
Bus route (line 156) → S Wilhelmsburg (18 minutes' drive)
- From S Veddel and S Wilhelmsburg to the city of Hamburg**
 Please take S 3 → S/U Hauptbahnhof/Landungsbrücken (a few minutes' drive)

